



Marconi House, WC2R
£1,025 p/w Furnished/Unfurnished



Marconi House, WC2R
£1,025 p/w Furnished/Unfurnished

A rare opportunity to rent a well presented two bedroom two bathroom apartment set within a fantastic mansions block.

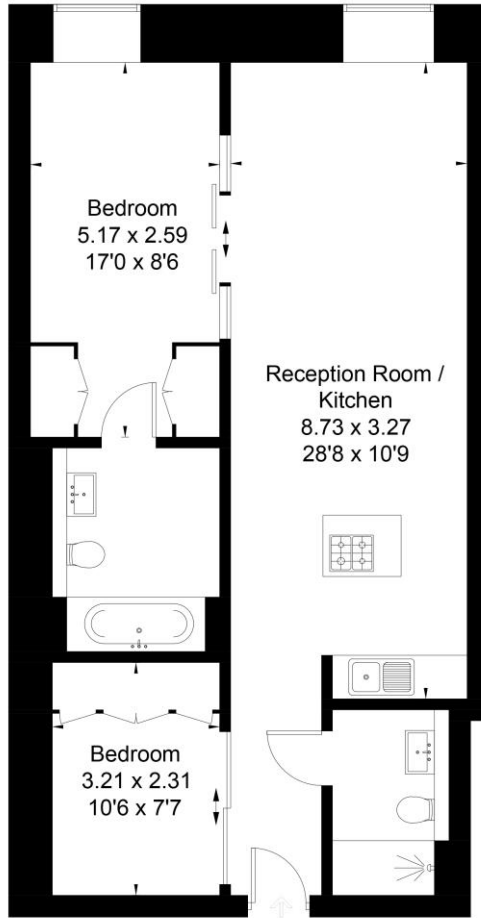
The apartment has been finished to an excellent standard throughout with A/C, Lutron lighting and an integrated Soundsystem that are just a few features to mention throughout the unit. Comprising of a large everyday space that consists of your reception/living room, open plan kitchen with state of the art appliances. The principle bedroom suite with plenty of wardrobes, a second bedroom and a family bathroom. The flat further benefits from the buildings 24 hour concierge service and passenger lift.

Marconi House is an incredible grand II listed building on the strand, literally right on the doorstep of London's Theatreland; the Waldorf Hotel, the Novello Theatre and Somerset House are opposite. Quite literally everything you need as at your front door! Temple, Holborn, Covent Garden & Charing Cross tube stations are all close by which provides a simple commute across the capital.

24 Hour Concierge
2 Lifts
Prime Location
Modern Block
Council Tax Band G
Ref TOW230113

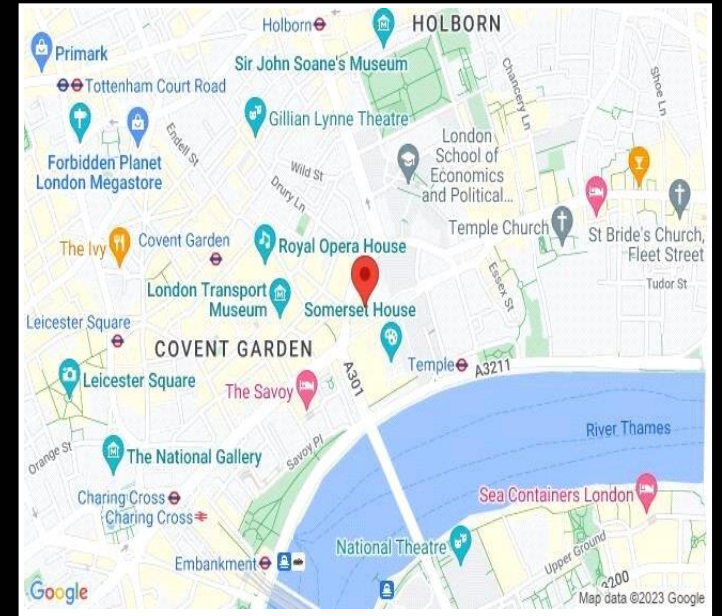


Approximate Area = 68.0 sq m / 732 sq ft
Including Limited Use Area (1.8 sq m / 19 sq ft)



Seventh Floor IN

Surveyed and drawn in accordance with the International Property Measurement Standards (IPMS 2: Residential)
fourwalls-group.com 852802



Energy Efficiency Rating		Current	Potential
Very energy efficient - lower running costs			
(92+)	A		
(81-91)	B		
(69-80)	C	73	73
(55-68)	D		
(39-54)	E		
(21-38)	F		
(1-20)	G		
Not energy efficient - higher running costs			
England, Scotland & Wales		EU Directive 2002/91/EC	

For clarification, we wish to inform prospective tenants that we have prepared these lettings particulars as a general guide. We have not carried out a detailed survey, nor tested the services, appliances and specific fittings. Room sizes are approximate and rounded: they are taken between internal wall surfaces and therefore include cupboards/shelves, etc. Accordingly, they should not be relied upon for carpets and furnishings.